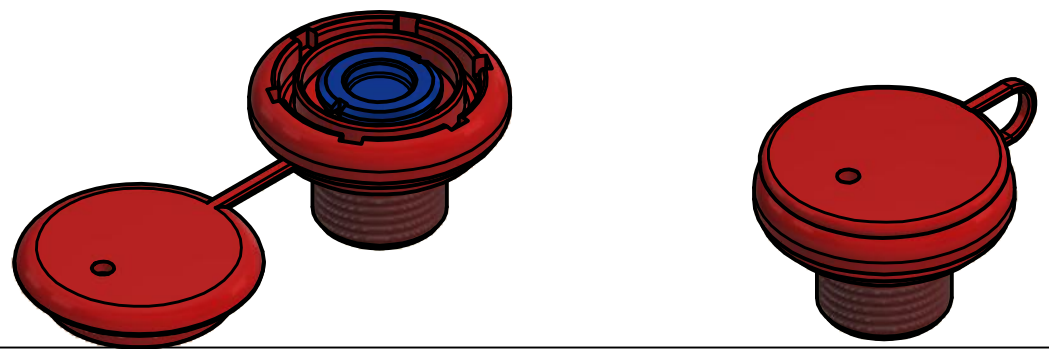


INSTALLATION

1. Hole required for valve installation $\varnothing 25 \pm 0.5$ mm
2. Tightening torque = 16 Nm
The valve assembly should be re-torqued after at least 12 hours
3. The users responsibility to ensure that any fluid used during the installation or operation are compatible with this valve
4. Pressure setting available in the table attached

APPLICABLE STANDARD
ISO 15738:2002(E)



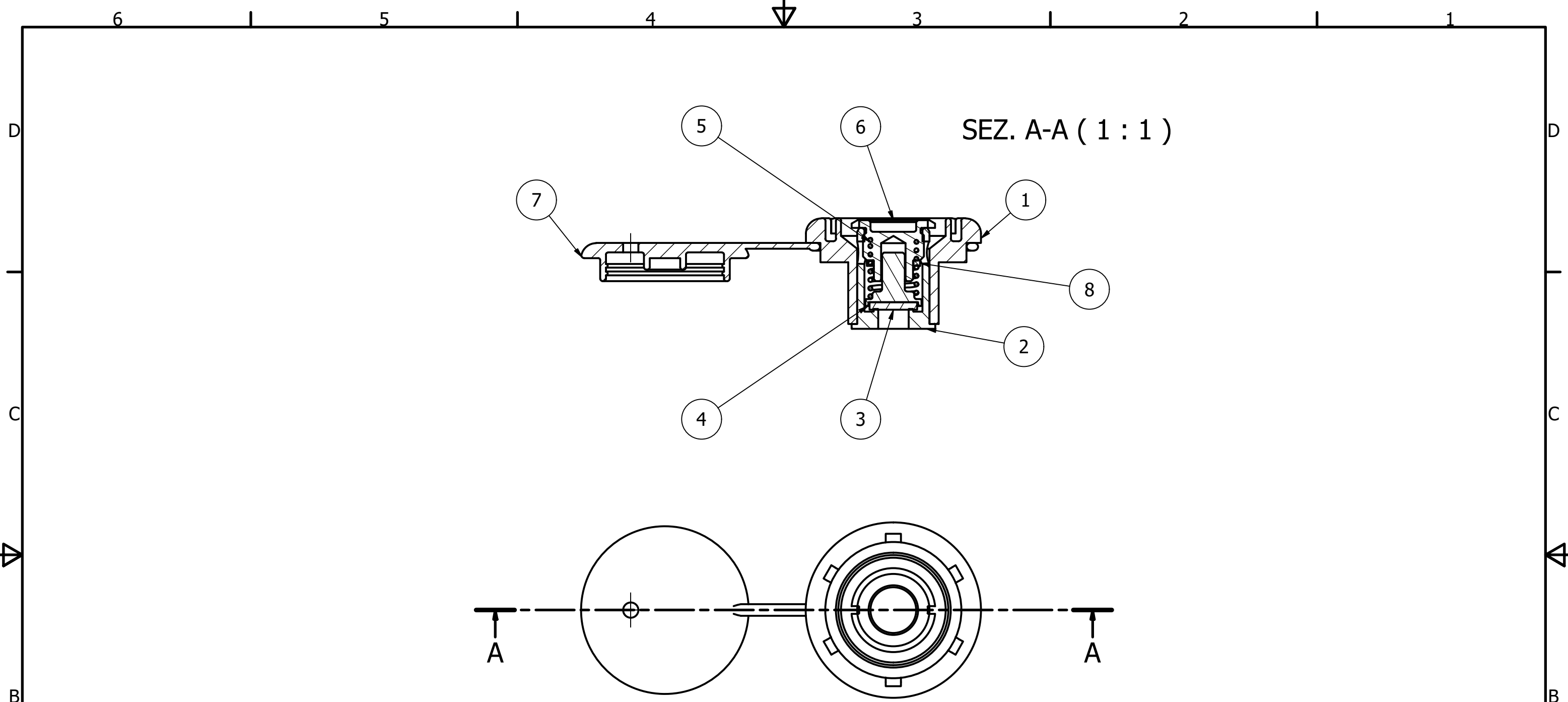
codes and settings of relief valves

PN	Calibration	Color	Nominal	Opening	Closing	Springs
KA080401	14/16	RED	1034 mbar / 15 psi	1103 mbar / 16 psi	966 mbar / 14 psi	xxxxx
KA080402	15/17	YELLOW	1103 mbar / 16 psi	1172 mbar / 17 psi	1034 mbar / 15 psi	xxxxx
KA080403	16/18	GREEN	1172 mbar / 17 psi	1241 mbar / 18 psi	1103 mbar / 16 psi	3865090
KA080404	17/19	BLUE	1241 mbar / 18 psi	1310 mbar / 19 psi	1172 mbar / 17 psi	xxxxx
KA080405	18/20	ORANGE	1310 mbar / 19 psi	1379 mbar / 20 psi	1241 mbar / 18 psi	xxxxx
KA080406	21/23	BLACK	1517 mbar / 22 psi	1586 mbar / 23 psi	1448 mbar / 20 psi	xxxxx


CRONOLOGIA REVISIONI			
REV	DESCRIZIONE	DATA	PROG
05	Washer (8). Rev: Nut and alluminium body	26/06/2020	P.D.
04	Drop stitch Protection	13/02/2020	P.D.
03	new design	21/01/2020	P.D.
02	New plate	10/10/2019	P.D.
01	VA20 gasket e new parts	20/03/2019	P.D.

Progettato	Controllato	Cod. Componente	Data	Materiale
P.D.	A.A.	see table	17/01/2020	

	SCOPREGA	RELIEF VALVE RV SUP		Massa
		KA08040X	Edizione	Foglio
		05	1 / 2	



ELENCO PARTI			
ELEMENTO	QTÀ	NUMERO PARTE	DESCRIZIONE
1	1	S201409	CORPO VA50 RVSUP tornito
2	1	5801300	Camicia RV SUP
3	1	3481000	GUARNIZIONE RV SUP
4	1	5801310	Piattello RV SUP
5	1	3865090	MOLLA RV SUP 16-18
6	1	5801320	Dado RV SUP
7	1	S101290	Tappo VA30 forato
8	1	3800256	RONDELLA DISTANZIATORE 14X10.5X2

Progettato P.D.	Controllato A.A.	Cod. Componente see table	Data 17/01/2020	Materiale
 SCOPREGA			RELIEF VALVE RV SUP	
			KA08040X	Edizione 05